



THE CAMDEN  
SCHOOL FOR GIRLS

# Attendance Policy



Lead staff member  
Link Governor  
Approved  
Review Date  
Review Committee

Kathia Derrar  
Kate Fox  
October 2024  
October 2026  
C&S

The Camden School for Girls wants to ensure that all pupils receive a full-time education to maximise opportunities, attainment, well-being, and wider life chances for everybody to realise their potential. We aim for an environment, which enables and encourages all members of the school community to strive for excellence and enjoyment in education. For our children to gain the greatest benefit from their education it is vital that they attend regularly and punctually.

At The Camden School for Girls our objectives are to develop an ethos which demonstrates to children, parents/carers, and the wider community the importance of good attendance and punctuality.

Regular and punctual attendance is essential for effective learning and children should be at school, on time, every day the school is open unless the reason for the absence is unavoidable. This is important to your child's achievement, wellbeing, and their wider development. There is a renewed national focus on maximising pupils' time in the classroom, as evidence shows that the students with the highest attendance throughout their time in school gain the best GCSE and A Level result.

Some pupils find it harder than others to attend school. The school and partners will work with pupils and parents to remove any barriers to attendance by building strong and trusting relationships and working together to put the right support in place. If you have any concerns about your child's attendance, please speak to us. The key contacts are at the end of this document and on our school website.

### **Attendance target**

The Camden School for Girls intends to maintain its high levels of attendance each year. Our current target for 2024 is 94%

The school has set a target to improve attendance and your child has an important part to play in meeting these targets.

Minimum attendance targets for the school and for classes are displayed in the school and you should take time to study them.

We will keep you updated regularly about progress to this level and how your child's attendance compares.

Our target is to achieve better than this because we know that good attendance is the key to successful schooling, and we believe our pupils can be amongst the best in the country.

Throughout the school year we monitor absences and punctuality to show us where improvements need to be made. Information on any projects or initiatives that will focus on these areas will be provided in our Home - School bulletin and we ask for your full support.

## **Term dates**

School term dates are published in advance and can be found on the school website.

Whilst every effort is made for common term dates across the council, there are times that term dates may differ if you have children attending more than one school. Please check the term dates on each school website and do not assume each school will have the same term dates.

They are also available from the school office and our website.

Staff training days (inset days) are included in the term dates schedule. Parents or carers will receive written notice of any changes in term dates.

Working together to improve school attendance states “the DfE does not consider a need or desire for a holiday or other absence for the purpose of leisure and recreation to be an exceptional circumstance.”

## **Why Regular Attendance is important:**

### **1. Learning**

We know from experience and from studies that regular absence and poor punctuality can have a detrimental effect on a child’s learning. When a pupil is absent or arrives late it disrupts teaching routines so may affect the learning not only of that pupil but also that of others in the same class.

Ensuring your child’s regular attendance at school is your legal responsibility and permitting absence from school without a good reason creates an offence in law and may result in a penalty notice or prosecution.

### **2. Safeguarding and access to support services**

At The Camden School for Girls, we believe every pupil should be able to learn in an enjoyable and safe environment and be protected from harm. We respect and value all children and are committed to providing a caring, friendly, and safe environment for all our pupils so they can learn and participate in all school activities in a relaxed and secure atmosphere.

Attending school regularly promotes the welfare and safety of children whilst they are not in the care of their parents/carers. Safeguarding is about offering early help and support to children and families and difficulties with attendance and lateness may be signs that something is worrying the child or that there are difficulties within the family. Poor or irregular attendance, persistent lateness, or children missing from education may be considered a safeguarding matter if this places your child at risk of harm.

Safeguarding the interests of each child is everyone's responsibility and within the context of this school; safeguarding and promoting the welfare and life opportunities for children encompasses:

More information on safeguarding and the protection of children can be found in the schools Safeguarding and Child Protection Policy. (See school's website)

To allow us to safeguard the children in our care it is important that parents and carers provide the school with their current contact details and provide at least three other contact numbers in case of emergency.

It is also important for parents to let school know of any specific vulnerability in relation to their child or home circumstances. If you are uncertain about what would be considered a vulnerability, please speak with your child's HOY.

Other people you can contact about attendance issues are:

- The EWO (Educational Welfare Officer)
- Your child's form tutor
- Pastoral lead
- Attendance Officer

We will seek advice on attendance concerns from Camden's Pupil Attendance Service and where appropriate we will seek consent to refer to other support services that can help support pupils and their families to improve attendance.

**Dylan Buckle** - School Inclusion Team Manager

**Sona Ruparell** - School Inclusion & Children Missing Education Officer

**Ed Magee** - Development Coordinator

**Mohammed Habibur Rahman** - Court Officer, Pupil Attendance Service

### **Promoting Regular Attendance**

Helping to create a pattern of regular attendance is everybody's responsibility - parents, pupils, and all members of school staff.

**To help us all to focus on this we will:**

- Provide parents / carers with punctuality and attendance rates through their child's progress review, twice a year.

- Celebrate good attendance by displaying individual and class achievements.
- Reward good or improving attendance through class competitions, certificates, and outings/events. There may be factors in some pupil's lives that may mean they do not achieve 100% attendance but good or improved attendance should also be celebrated.
- Run promotional events when parents, pupils and staff can work together on raising attendance levels across the school.
- Have regular communication between EWO and families when attendance and punctuality becomes a concern.

### **Telling the children about the importance of good attendance and punctuality**

Students are encouraged to walk and cycle to school and to get to school on time before the bell goes.

Students are encouraged to go to bed at an appropriate time so that they are not tired the next day. They are encouraged to prepare for the school day on the night before as much as possible, so they are not rushed in the mornings.

School to endeavour that the school council is consulted with on an ongoing basis to help promote and develop initiatives to improve school attendance and punctuality.

### **The Law relating to attendance and safeguarding.**

Section 7 of the Education Act 1996 states that:

*the parent of every child of compulsory school age shall cause him / her to receive efficient full-time education suitable:*

*(a) to age, ability, and aptitude and*

*(b) to any special educational needs, he/ she may have either at school or otherwise*

Compulsory School Age: A child is compulsory school age from the beginning of the next term after their 5<sup>th</sup> birthday until the last Friday of June in the academic year of their 16<sup>th</sup> birthday.

Section 175 of the Education Act 2002 places a duty on local authorities and governing bodies to have regard to guidance issued by the Secretary of State with regard to safeguarding and promoting the welfare of children and students under the age of 18.

This policy is written in relation to the following acts of Parliament and guidance relating to attendance:

- Education Act 1996
- The Education (Pupil Registration) (England) Regulations 2006
- We will also take account of all new legislation and initiatives.
- [Working together to improve school attendance.](#)

## **Types of Absence**

Every half-day absence from school must be classified by the school (not by the parents), as either AUTHORISED or UNAUTHORISED. This is why information about the cause of any absence is always required, preferably in writing.

### **Authorised Absence**

An authorised absence is where the school has either given permission in advance for the child to be absent or where an explanation offered is accepted as satisfactory justification for absence.

Absence may generally be authorised for the following reasons:

- Illness, medical appointments - appointments should always be made outside school times where possible.
- Unavoidable cause (which is expected to be an emergency and unavoidable)
- Days of religious observance

### **Unauthorised Absences**

An unauthorised absence is where either no explanation has been given for the child's absence or where the explanation offered is not considered acceptable by the school.

This includes:

- Parents / Carers keeping children off school to assist with translation.
- Absences which have never been properly explained.
- Shopping, looking after other children or birthdays.
- Day trips and holidays in term time.

If an absence is recorded as unauthorised the school may refer this to the Local Authority's Pupil Attendance Service. The Local Authority can use various sanctions to promote regular attendance such as issuing a penalty notice fine or initiate court proceedings.

Whilst any child may be off school because they are ill, it can sometimes be that they are reluctant to attend school. Any problems with regular attendance are best sorted out between the school, the parents/carers, and the child wherever possible. If your child is reluctant to attend, it is never better to cover up their absence or to give in to pressure to excuse them from attending. This gives the impression that attendance does not matter and usually makes things worse.

### **Persistent and Severely Absent pupils (PA and SA)**

A pupil is a 'persistent absentee' if they miss 10% or more of their schooling across the school year for whatever reason.

A pupil is "severely absent" if they miss 50% or more of their school across the school year for whatever reason.

Absence at both these levels is causing considerable damage to any child's educational prospects and we need parent's fullest support and cooperation to tackle this.

We monitor all absences thoroughly. Any case that is seen to have reached the PA or SA thresholds or is at risk of moving towards that level, is given priority and you will be informed of this immediately.

PA and SA pupils are tracked and monitored carefully through our pastoral support system, and we also combine this with academic mentoring where absence affects attainment.

All our PA and SA pupils and their parents/carers are subject to an Action Plan and the plan may include allocation of additional support through a Mentor, individual incentive programmes and participation in group activities around raising attendance.

If your child has or is at risk of reaching the threshold for Persistent Absence or Severely Absent you will be asked to provide evidence for any future absence. This may be medical evidence for illness which can be in the form of prescription, appointment cards, medicine packaging, hospital letter or a screen-print from the My GP app. Where we have concerns about your child's health, we may ask you to talk to the school nurse or for permission to contact their GP or other medical professionals for advice.

We will use our attendance data to identify patterns of poor attendance for individuals and for different groups within the school population. Once concerns have been identified we will work together with pupils, parents, and other services where appropriate to resolve the issue, understand and remove any barriers to attendance and work to resolve them before they become a more serious issue.

### **Absence Procedures**

**If your child is absent, you must:**

- Contact us as soon as possible on the first day of absence and give an expected return date. You need to call at least every second day thereafter to advise school of your child's progress.
- Send a note in on the first day they return with an explanation of the absence – you must do this even if you have already telephoned us.
- Or you can call into school and report to reception, who may arrange for a member of staff to speak with you.
- After 5 consecutive days of absence, parents / carers must provide the school with medical evidence.

**If your child is absent, we will:**

- Telephone, text or email you on the first day of absence if we have not heard from you.
- Invite you in to discuss the situation with our Educational Welfare Officer and/or Pastoral Leaders, Assistant Headteacher if absences persist.
- Consult with the Pupil Attendance Service if attendance moves below 95% and at least 10% or more of the absences are unauthorised.

**The Educational Welfare Officer (EWO)**

- Monitoring and analysing attendance data
- Ensure attendance data is accurate and up to date.
- Benchmarking attendance data to identify areas of focus for improvement.
- Providing regular attendance reports to school staff and reporting concerns about attendance to the designated senior leader responsible for attendance and the headteacher
- Collaborating with school staff e.g., pastoral lead/family liaison officer/SENCo to tackle persistent absence and to follow up absences.
- Conducting (announced/unannounced) home visits for students with poor attendance.
- Advising the deputy headteacher when to issue fixed penalty notices.

Is aware of those pupils the school is most concerned about for example (LAC) looked after children, children subject to safeguarding procedures, Children with EHCPs or other vulnerable children.

**Other school staff who may deal with attendance are:**

**Lynn Caufield** - Reception/ School Attendance Officer.

**Jimi Appleton** - Data Manager

## **The role of Governors**

There is a School Governor with responsibility for school attendance policies and issues.

Reports and statistics and initiatives to improve school attendance will be shared and consulted on with the Governing Board and documented in Governor's meeting minutes.

## **The Headteacher's Role**

The Headteacher will consider every request for leave on its individual merits. Ultimately the Headteacher will be the final arbiter of the authorisation of any leave.

The Headteacher and Deputy Headteacher oversee the collection and reporting of attendance data and the publication of statistics and reports on attendance to parents, pupils, governors and to Camden Council. Attendance Data will also inform the annual review of the school's attendance policy and practice. An attendance audit is carried out and reported at the end of each academic year. This is available to the local authority and the Department of Education (DfE).

## **The role of the Deputy Headteacher**

The Deputy Headteacher (Kathia Derrar) and Educational Welfare Officer (Faith Opito) will work together to devise a working attendance policy, reviewed at regular intervals, and based on school attendance data.

They will monitor weekly attendance patterns and trends and identify whole school strategies and support for children who missed school. Evaluate effectiveness of interventions and their impact on attendance levels.

The Deputy Head Teacher is aware of those pupils the school is most concerned about for example (LAC) looked after children, children subject to safeguarding procedures, Children with EHCPs and other vulnerable children.

The Deputy Head Teacher consults with the Pupil Attendance Team / other services as appropriate.

The Deputy head Teacher attends Targeted Support Meeting where appropriate.

Where there is a lack of engagement the Deputy Head teacher will hold more formal conversations with parents and raise the issue of the potential need for legal intervention.

## **The role of teachers**

All class teachers / tutors have a responsibility in keeping an attendance register. This is a legal document and must be completed accurately. It is a legal requirement that the attendance register must be marked at the beginning of each morning and afternoon session. Absences are coded according to the information received from the parent of the child.

Morning registers should be completed by form tutors by 9:00am

Where it is not possible to access the attendance management system manual registers should be returned to the attendance officer / school office by the above times.

Cover staff are given a paper copy of each class register.

Tutors monitor the register daily and are encouraged to highlight any emerging patterns of absence and lateness or any alarming changes in this area.

Tutors encourage patterns of punctuality and good attendance by praising those children who come to school each day and arrive on time.

Tutors and HOYS report any concerns about a child's attendance or punctuality to the Educational Welfare Officer and the Deputy Headteacher. They do this for example via CPOMS / In person / via email / centralised list via a shared drive. This can sometimes then be referred to the LA if a Penalty Notice or legal action is being sought.

Ensure that information about absences is passed on to the appropriate person.

Welcome back pupils after an absence using positive language.

### **Role of Heads of years**

Meet with the EWO once a week. Attend and/or arrange meetings with families and other agencies.

Monitor progress and attendance of students in an Alternative Provision.

To monitor and track the caseload of students.

Is aware of those pupils the school is most concerned about for example looked after children, children subject to safeguarding procedures, Children with EHCPs or other vulnerable children.

To follow up non-school attendance issues in line with attendance policy

## Legal sanctions and actions

The school will make every attempt to contact the parent or carer by telephone, in writing or home visit. In the first instance we would invite them to discuss the problem unless the absence relates to leave in term time without permission. Where all other avenues have been exhausted and support is not working or not being engaged with, attendance may be enforced where necessary through statutory intervention or prosecution to protect the pupil's right to an education. A referral may be made to the LA under the following circumstances based on the national framework for penalty notices:

- A single consistent national threshold for when a penalty notice must be considered of ten sessions (usually equivalent to five school days) of unauthorised absence within a rolling ten school week period, may span different terms or school years. This will include unauthorised absence for lateness Code U.
- A term time holiday taken without permission would count towards the ten sessions.
- A national limit of two penalty notices that can be issued to a parent for the same child within a rolling 3-year period, so at the third (or subsequent) offence(s) other legal prosecution will be considered.

Penalty notices are issued to each parent or carer for each of their children for example two parents with three children would receive a total of six penalty notices, one parent with two children will receive a total of two penalty notices.

From September 2024 each penalty notice is £80 if paid in the first 21 days, from days 22 to 28 the fine doubles to £160 for each penalty notice.

For the second offence issued to the same parent for the same child within a rolling 3-year period being charged at a higher rate of £160 for days 1 – 28, with no option for this second offence to be discharged at the lower rate of £80.

The Pupil Attendance Service has asked us to point out that it is not possible to pay these fines by instalments or lower the cost when they have increased, or to simply fine one parent.

Payment can be made online and instructions on how to pay are included on the penalty notice letter. Any problems with paying online should be discussed as early as possible with the Pupil Attendance Service by ringing 020 7974 1007.

If a penalty notice is not paid or the Pupil Attendance Service feels that the level of absence warrants court action, the local authority will arrange for a court hearing. There are a range of sentencing options available to the magistrate including the maximum penalty of a fine of up to £2500 per parent for each offence as well as the possibility of up to three months in prison.

## **What happens after a long absence?**

The school is sensitive to the needs and circumstances of pupils returning after significant periods of absence and will support the smooth reintegration of pupils both academically and socially. In such circumstances the school will work with parents, carers and pupils towards an agreed reintegration plan which may include opportunities for counselling and feedback, peer support and mentoring, along with an agreed review period.

## **Lateness**

Poor punctuality is not acceptable. If your child misses the start of the day, they can miss work and not spend time with their class teacher getting vital information / instructions and news for the day. Late arriving pupils can also disrupt lessons, and this can be embarrassing for the child. This can encourage absence.

If your child is late; it will result in a 30 minute detention at lunchtime. If your child fails to sign in, when late, at reception; it flags up as an absence and you will be sent an absence email.

## **How we manage lateness**

The school day starts at **9:00 am** and we expect your child to be in class at that time.

Registers are marked by **08:50 am** and your child will receive a 'late' mark if they are not in by that time.

At **08:50 am** the registers will be closed. If your child arrives after that time, they will receive a lunchtime detention for 30 minutes from **1:00 -1:30 pm**.

If your child has a persistent late record, you will be asked to meet with the HOY and/or Educational Welfare Officer to resolve the problem, but you can approach us at any time if you are having problems getting your child to school on time.

The school day ends at 3:30 pm on Monday, Tuesday, Thursday and Friday and. The school day ends at 2:50 pm on Wednesdays .

## **Exceptional Leave in Term Time**

**Working together to improve school attendance states "the DfE does not consider a need or desire for a holiday or other absence for the purpose of leisure and recreation to be an exceptional circumstance."**

Parents should plan their holidays around school breaks and avoid requesting leaves of absence for holidays unless it is unavoidable. There is no entitlement in law for any leave of absence from school in term time. Taking leave in term time will affect your child's schooling as much as any other absence and we expect parents to help us by not taking children away in school time.

Remember that any monetary savings you may make by taking a holiday in school time are offset by the cost to your child's education.

All applications for a leave of absence must be made in advance to the Headteacher and will only be considered if there are exceptional circumstances. In deciding the school will consider the circumstances of each application individually, including any previous pattern of leave in term time. The Headteacher will be the final arbiter as to the authorisation of any leave.

Full details of our policy and procedures are available from the school.

Any period of leave taken without the agreement of the school, or more than that agreed, will be classed as unauthorised and may attract sanctions such as a Penalty Notice. Your child's school place may also be at risk. Previous good attendance or your child's educational ability are not considered when the school makes the decision. If you have siblings at other schools, you must seek permission from all the schools, and it is possible that one school may grant it, and another may not.

If exceptional leave is agreed, you will receive a letter from the school. If you do not get a letter **DO NOT**, assume that permission has been granted. Only the headteacher can decide if they will grant exceptional leave – **no one else in school has permission to do so** and leaving an application form is not permission to take leave.

If leave has been granted and a child returns late outside of the agreed dates either before or after, the school will reserve the right to authorise the entire period of leave taken.

If parents have any comments, concerns, or complaints regarding the school attendance policy these can be addressed in writing to the Headteacher, or an appointment can be arranged for discussion with the Headteacher. If any parents wish to work with the school in partnership to promote and implement good school attendance practice this is encouraged and applauded. If a parent believes the school can support or assist them in their child's school attendance, we would be happy to accommodate this.

Alternatively, parents or children may wish to contact the Pupil Attendance Service themselves to ask for help or information. They are independent of the school and will give impartial advice. Their telephone number is 0207 974 1653 or you can email [pas@camden.gov.uk](mailto:pas@camden.gov.uk)

## **Children Missing from Education**

If you move from the area and your whereabouts are unknown, the school can legally remove your child from the roll after 20 school days of unauthorised absence. It is **vital that you keep school informed of any change of details** and regularly update them if details change. Your child may be at risk of losing their school place if your whereabouts are not known.

It is also important that emergency contact information is kept up to date and that if you are leaving the area, you provide details of where and how you can be contacted. If you do not do this and the school is unable to trace your child, this would be treated as a **safeguarding matter**.

## **Help & Support**

If you need help with attendance, it is important that you contact school about the issues as soon as possible. The quicker we know what the problem is, the quicker that we can work together to solve it and put a plan together which will meet your child's needs and ensure your child can benefit from all that school has to offer. Where needed we can also involve other services to make sure that your child and your family gets the right support, at the right time from the right people.

### Summary

All school staff are committed to working with parents and pupils as the best way to ensure as high a level of attendance as possible and that every child's welfare and life opportunities are promoted.

### **The people responsible for attendance matters in this school are:**

**Headteacher:** Kateryna Law

**Deputy Headteacher:** Kathia Derrar

**Governor:** tbc

**Attendance lead (E.W.O) Educational Welfare Officer:** Lynne Caufield

**Date of Policy:** October 2024

**Date Approved by Governors:** October 2024

**Date of review:** October 2026

**Please note schools should have letters for:**

- 3-day absence – parents asked to respond in writing or telephone call – warn that they can be issued with penalty notice if no response
- 5-day absence – parents asked to respond in writing and provide medical evidence of reason for absence. Penalty Notice Warning can be sent.

**If the child is, consider to be vulnerable then this process needs to be escalated – always make sure you have a list of vulnerable children and who on SLT is the appropriate contact for example the SENDCO or the Designated Safeguarding Lead who may have other pertinent information that requires home visit or action on the first day of absence.**

**Absence escalation percentage table.**

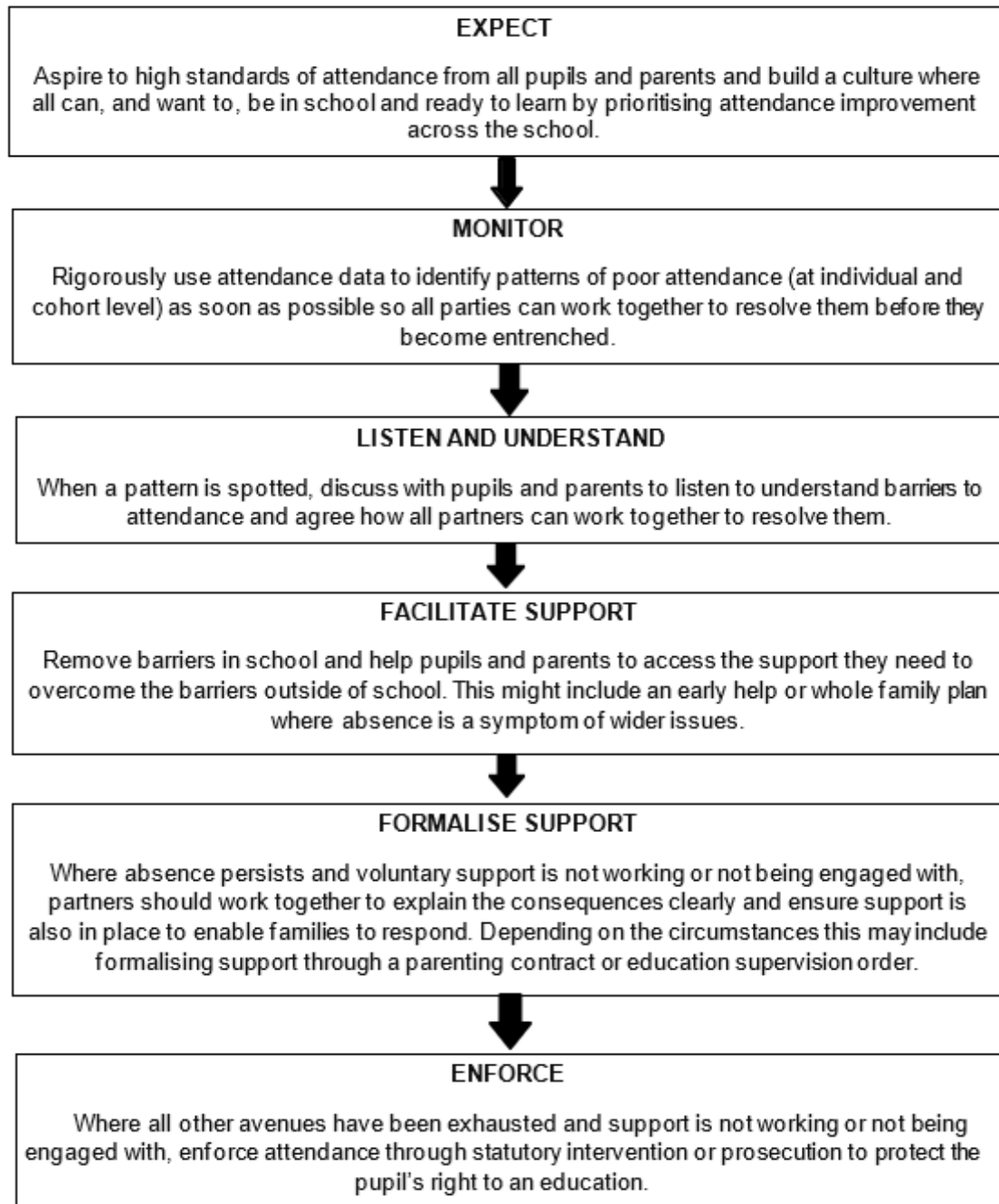
<b>Percentage</b>	<b>Responsibility</b>	<b>Action</b>
94% - 96%	School Action: Attendance Lead / Attendance Officer	Review attendance – consider is absence authorised (is it one period of absence of several individual days - look for patterns) If authorised may decide to monitor. If unauthorised – write to parents advising them of attendance level and of concerns / expectations and possible next actions.
91% - 94%	School Action	Review attendance – consider if authorised – is evidence being provided. If unauthorised, has it reached the threshold for Penalty Notice Warning. Is a home visit / school attendance panel appropriate?
90% or below	School Action + PAS / other agencies where appropriate.	Review attendance – consider if absence is authorised – review reason and pattern. If a child has a medical condition is a referral to Medical Needs Service appropriate. If they are subject to CP plan or other safeguarding concerns raised, then discuss with Designated Safeguarding Lead / allocated Social Worker. If low attendance is authorised due to exclusions have all inclusion options been considered (primary may seek advice from the re-integration service. Home visits should be made to ensure vital information is not missed. Consider absences using Emotional Based School Avoidance guidance.

		At less than 90% attendance a child is a Persistent Absentee and absence requires further investigation and possible statutory intervention depending on reason for absence. Long term illness should have been referred to the Medical Needs Team; exclusions to School Inclusion Service.
50% or below	School Action + PAS / other agencies where appropriate.	At less than 50% attendance a child is a Severely Absent and absence requires urgent further investigation and possible statutory intervention depending on reason for absence. Long term illness should have been referred to the Medical Needs Team; exclusions to School Inclusion Service.

Schools must notify the Local Authority of children who are absent for 10 consecutive days without authorisation. Email [pas@camden.gov.uk](mailto:pas@camden.gov.uk)

## Summary of Attendance policy:

The school and all partners will work together to:



## **School Key Contacts**

### **Heateacher**

**Name:** Kateryna Law

**Telephone number:** 020 7485 3414 (main switchboard)

**Email:** klaw@csg.school

### **Pastoral Lead / Deputy Headteacher**

**Name:** Kathia Derrar

**Telephone number:** 020 7485 3414

**Email:** kderrar@csg.school

### **Attendance Lead (E.W.O) - Educational Welfare Officer**

**Name:** Lynne Caufield

**Telephone number:** 020 7485 3414

**Email:** lcaufield@csg.school

### **Attendance Officer / Admin Officer**

**Name:** Lynn Caufield

**Telephone number:** 020 7485 3414

**Email:** lcaufield@csg.school

## **Head of Years / Key Stage Coordinator**

### **Year 7**

**Name:** Naomi Farrow

**Telephone number:** 020 7485 3414

**Email:** nfarrow@csg.school

### **Year 8**

**Name:** Katie Brown

**Telephone number:** 020 7485 3414

**Email:** kbrown@csg.school

### **Year 9**

**Name:** Leanne Ronayne

**Telephone number:** 020 7485 3414

**Email:** Ironayne@csg.school

### **Year 10**

**Name:** Mei Alvarado

**Telephone number:** 020 7485 3414

**Email:** malvarado@csg.school

**Year 11****Name:** Conchy Manas**Telephone number:** 020 7485 3414**Email:** cmanas@csg.school**Governor for attendance****Name** Kate Fox**Telephone number** 020 7485 3414**Email** kfox@csg.school

## A summary for parents

### All parents must read the School's attendance policy

.School aims to provide a conducive environment for education

- Regular attendance is crucial for effective learning, student achievement, well-being, and development. High attendance correlates with better academic outcomes.
- Our attendance target is 94% for all pupils.

### Safeguarding and Support Services:

- Attendance is integral to safeguarding children.
- Emergency contact information must be kept up-to-date to prevent loss of school place.

### Absence Procedures:

- Absences are classified as authorised or unauthorised.
- Schools will closely monitor any pupil with below 90% or 50% attendance.
- Parents must inform the school of absences promptly.
- Unexplained absences prompt communication from the school.
- Procedures are in place to address persistent lateness.

### Exceptional Leave in Term Time:

- School term dates are published in advance on the school website
- Requests for leave during term time are discouraged.
- Unauthorised leave may result in penalties.

### Legal Sanctions

- Legal interventions including penalty notices may be pursued for unauthorised absences.

### Help & Support:

- The school collaborates with students and parents to address attendance barriers. Parents are encouraged to seek help from the school for attendance issues. We may work with other agencies to offer support to improve attendance.
- Regular updates on attendance targets and progress are provided.